



## INSUL-LOCK® DS Flexible Closed Cell Pipe Insulation

### Design Features

- \* Easy to install with precise fit
- \* Double Seal Technology
  - Built-in pressure sensitive adhesive
  - Built-in PVC overlap tape with acrylic adhesive
- \* Scrim reinforcement on the seam surface
- \* Non-porous, fiber-free, and resistant to mold growth
- \* Resistant to moisture vapor flow
- \* Compatible with heating cable and tapes

### Specifications

**Material:** Environmentally-friendly, CFC-free, flexible elastomeric thermal insulation

**Operating Temperature Range:**  
-70°F (-57°C) through 220°F (104°C)

**R-value:** 3

**Color:** Black

**Length:** 6.0 feet (1.8 meter)

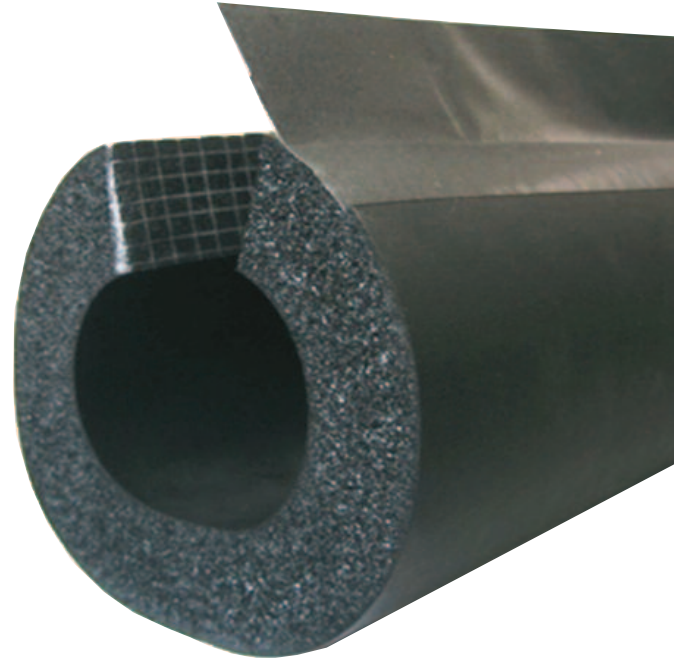
**Thickness:** 0.5" (1.3 cm)

**Density:** 3 to 6 Lbs/ft<sup>3</sup>

**Water vapor permeability:**  
Dry cup (Elastomeric insulation) 0.03 perm-in  
Wet cup (Glued seam with overlap) 0.12 perm-in

**Water absorption % (Volume change):** 0

**Flammability:** UL-94 5 V-A, V-O



### Typical Applications

- Freeze Protection
- Prevent condensation on refrigerant lines, cold water plumbing, roof drains, and chilled water systems
- Many other outdoor and indoor applications



### Standard Closed Cell Pipe Insulation

Preformed pipe insulations are 1/2 inch thick, 6 foot long with overlap flap with Pressure Sensitive Adhesive (PSA).

Nominal ID	Nominal OD	Recommended for Pipe OD	Part Number
7/8"	2-1/8"	3/4"	HTP90060
1-1/8"	2-3/8"	1"	HTP90061
1-3/8"	2-5/8"	1-1/4"	HTP90062
1-5/8"	2-7/8"	1-1/2"	HTP90063
2"	3-1/8"	none	HTP90064
2-3/8"	3-1/2"	none	HTP90065
2-5/8"	4"	none	HTP90066
2-7/8"	4-1/8"	none	HTP90067
3-1/8"	4-1/2"	none	HTP90068
3-1/2"	5"	none	HTP90069



### SEAM-SEALING TAPE

Seals spaces between multiple pieces of insulation and prevents heat loss.

.75" (51mm) x 180" (4.5 m) roll.

**Part Number:** HTP90058