

Die Cast Aluminum Heads

Design Features:

- * Plated chain attaches cover to body
- * Body is O-ring gasketed
- * Available in 2-terminal or 4-terminal
- * Comes in three sizes—Standard, Medium and Miniature—to allow for design flexibility
- * Has grommeted conduit entry for lead wire or flexible cable

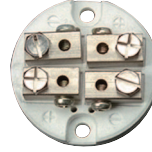
Type "A" Standard Size Die Cast Aluminum Head



3-1/2"H x 4"L x 3-1/4"W



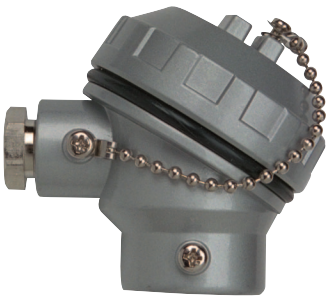
2-Terminal Ceramic Block
P/N: **TCA-116-101**



4-Terminal Ceramic Block
P/N: **TCA-116-102**

Sensor Opening (FNPT)	Conduit Opening (FNPT)	Part Number		
		Head Only	Head with 2-Terminal	Head with 4-Terminal
3/4"	1/2"	TCA-110-104	TCH10001	TCH10003
1/2"	1/2"	TCA-110-105	TCH10002	TCH10004

Type "B" Medium Die Cast Aluminum Head



3-1/2"H x 3-3/4"L x 2-5/8"W



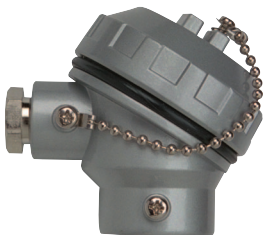
2-Terminal Ceramic Block
P/N: **TCA-116-103**



4-Terminal Ceramic Block
P/N: **TCA-116-104**

Sensor Opening (FNPT)	Conduit Opening (FNPT)	Part Number		
		Head Only	Head with 2-Terminal	Head with 4-Terminal
1/2"	3/8"	TCA-110-106	TCH10005	TCH10008
3/8"	3/8"	TCA-110-107	TCH10006	TCH10009
1/4"	3/8"	TCA-110-108	TCH10007	TCH10010

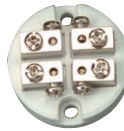
Type "C" Miniature Die Cast Aluminum Head



2-5/8"H x 3"L x 2-5/16"W



2-Terminal Ceramic Block
P/N: **TCA-116-105**



4-Terminal Ceramic Block
P/N: **TCA-116-106**

Sensor Opening (FNPT)	Conduit Opening (FNPT)	Part Number		
		Head Only	Head with 2-Terminal	Head with 4-Terminal
1/2"	3/8"	TCA-110-109	TCH10011	TCH10014
3/8"	3/8"	TCA-110-110	TCH10012	TCH10015
1/4"	3/8"	TCA-110-111	TCH10013	TCH10016