

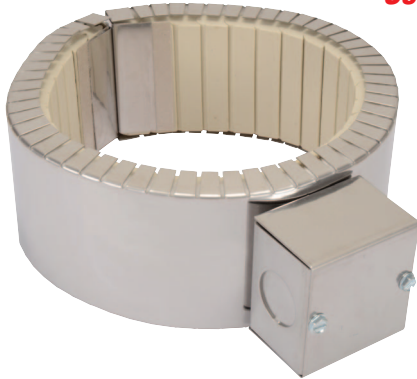
## Terminations

### General Purpose Terminal Boxes: Type C2 & Type C5

**Terminal Boxes** are available with all types of insulation, construction styles, or clamping variations. It is a simple and economical way to protect employees from electric shock or prevent electric shorts that can result from exposed wiring on band heater electrical installations.

The Heavy Duty Terminal Boxes have a 1/2" trade size knockout (actual diameter 7/8") that will accept standard armor cable connectors. The boxes can be field assembled on band heaters that have a center distance between screws of 7/8". To simplify installation the boxes can be pre-wired with galvanized armor, stainless steel armor, or wire braid.

### Ceramic Band Type C2 – Standard Terminal Box



#### One-Piece Band

**Standard Termination Location:** opposite the gap; center of width

- \* **Minimum Inside Diameter:** 2" (50.8 mm)
- \* **Minimum Width:** 1-1/2" (38.1 mm)
- \* **Maximum Volts/Amps:** 480VAC/25A

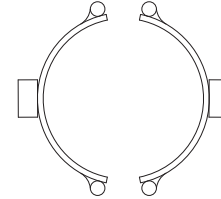
#### Type C2 Standard Box

- C2A**—Box only
- C2B**—with galvanized armor
- C2C**—with stainless steel armor
- C2D**—with wire braid

**Box Size:** 1-1/2"H × 1-1/2"W × 2-1/2"L  
for bands 1-1/2" to 2" wide

**Box Size:** 1-1/2"H × 2-1/8"W × 2-1/8"L  
for bands greater than 2" wide

**NOTE:** Heater dimensions will determine terminal configuration.



#### Two-Piece Band

**Standard Termination Location:** center of each half; center of width

#### Available on Reverse Band

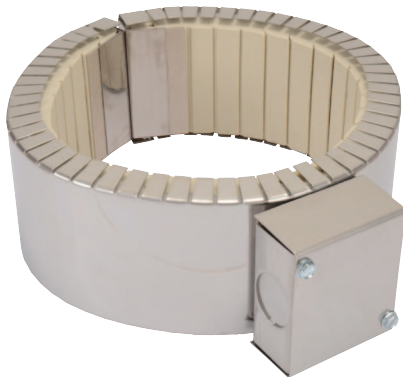
- \* **Minimum Inside Diameter:** 15" (381 mm)

- \* **Minimum Inside Diameter:** 4" (101.6 mm)

- \* **Minimum Width:** 1-1/2" (38.1 mm)

- \* **Maximum Volts/Amps:** 480VAC/25A each half

### Ceramic Band Type C5 – Low-Profile Terminal Box



#### One-Piece Band

**Standard Termination Location:** opposite the gap; center of width

- \* **Minimum Inside Diameter:** 2" (50.8 mm)
- \* **Minimum Width:** 1-1/2" (38.1 mm)
- \* **Maximum Volts/Amps:** 480VAC/25A

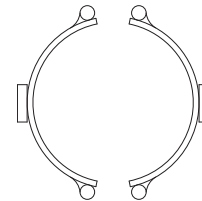
#### Type C5 Low Profile Box

- C5A**—Box only
- C5B**—with galvanized armor
- C5C**—with stainless steel armor
- C5D**—with wire braid
- C5J**—Box with lead wire

**Box Size:** 1"H × 1-1/4"W × 3"L  
for bands 1-1/2" to 2" wide

**Box Size :** 1"H × 2-1/4"W × 2"L  
for bands greater than 2" wide

**NOTE:** Heater dimensions will determine terminal configuration.



#### Two-Piece Band

**Standard Termination Location:** center of each half; center of width

#### Available on Reverse Band

- \* **Minimum Inside Diameter:** 15" (381 mm)

- \* **Minimum Inside Diameter:** 4" (101.6 mm)

- \* **Minimum Width:** 1-1/2" (38.1 mm)

- \* **Maximum Volts/Amps:** 480VAC/25A each half



**Note:** If a Low Profile Box with cable or leads is required, it is strongly recommended to order it pre-wired by the factory.

**Exposed electrical wiring on band heater installations is a violation of Electrical Safety Codes including O.S.H.A.**