

Ceramic Band Insulation Options

Standard Insulation (S): 1/4"

Built-In ceramic fiber insulation 1/4" thick standard on all Ceramic Bands will reduce power consumption by 25 to 30 percent, and lower external temperatures.



Standard Insulation
Cross Section

Optional Double Insulation (D): 1/2"

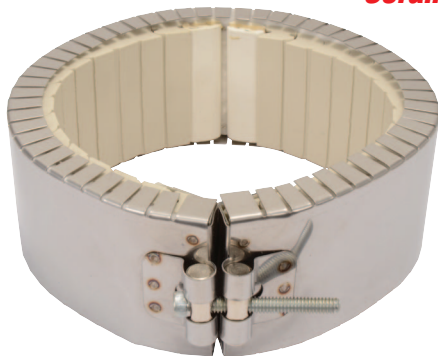
For situations requiring additional insulation for lower external temperatures and increased electrical energy savings, Tempco offers Double Insulated Ceramic Bands with a full 1/2" thick ceramic fiber insulation. This will decrease power consumption by 35 to 37 percent when compared to uninsulated band heaters.



Double Insulation
Cross Section

Note: Not available for Reverse Construction

Ceramic Band Clamping Variations



Type B – Built-In Bracket (Standard)

The Built-In Bracket is the basic design most often specified by OEMs and processors. The standard screw used is 1/4-20. It is available with all types of insulation, construction styles, and termination variations.

Type S – Built-In Bracket with Spring-Loaded Screw

The Built-In Bracket can also be supplied with a spring-loaded screw. The spring-loaded clamp aids in absorbing thermal expansion.

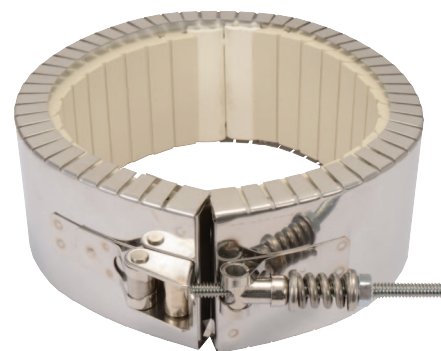
Limitations –

One-Piece Bands

Min. ID: 2" (50.8 mm)
Min. Width: 1" (25.4 mm)

Two-Piece Bands

Min. ID: 4" (101.6 mm)
Min. Width: 1" (25.4 mm)



Type L – Latch and Trunnion

The spring-loaded Latch and Trunnion clamping system is ideal for bands over 12" in diameter to absorb thermal expansion and facilitate installation on large bands.

The Latch and Trunnion clamping system is available with all types of insulation, construction styles, and termination variations.

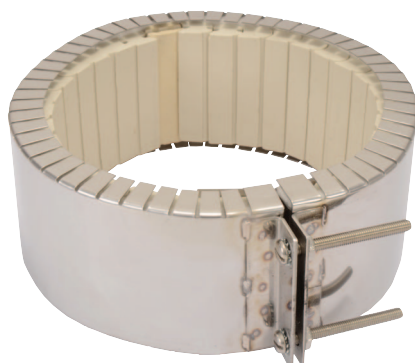
Limitations –

One-Piece Bands

Min. ID: 4" (101.6 mm)
Min. Width: 1" (25.4 mm)

Two-Piece Bands

Min. ID: 4" (101.6 mm)
Min. Width: 2" (50.8 mm)



Type F – Bent-Up Flange (Ears)

The Bent-Up Flange (Ears) design is available with all types of insulation, construction styles, and termination variations.

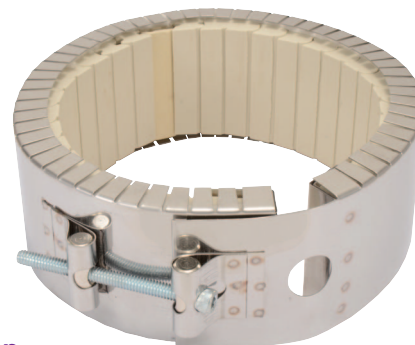
Limitations –

One-Piece Bands

Min. ID: 2" (50.8 mm)
Min. Width: 1" (25.4 mm)

Two-Piece Bands

Min. ID: 4" (101.6 mm)
Min. Width: 2.5" (63.5 mm)



Shell Overlap

The Shell Overlap design is the preferred method of providing a thermocouple mounting hole in a ceramic band heater. It is available with all types of insulation, construction styles, clamping and termination variations.

Limitations –

One-Piece Bands

Min. ID: 3" (76.2 mm)
Min. Width: 1-1/2" (38.1 mm)
Standard Hole: 3/4" (19.1 mm)

Two-Piece Bands

Min. ID: 4" (101.6 mm)
Min. Width: 2" (50.8 mm)
Standard Hole: 3/4" (19.1 mm)