

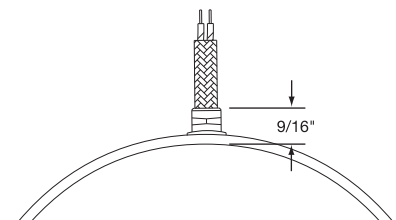
### Abrasion Resistant Lead Terminations:

#### Type W1, Type W2, Type W2M, Type W3, Type W4 & Type W5M

Available on any clamping or construction variation.  
Wire braid leads offer sharp bending not possible with armor cable.

### Duraband® Type W1 & W1T – Straight Wire Braid Leads

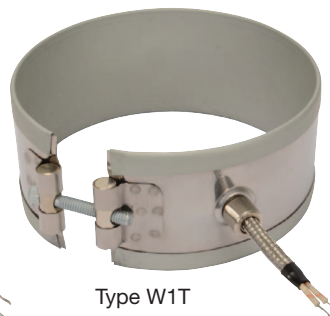
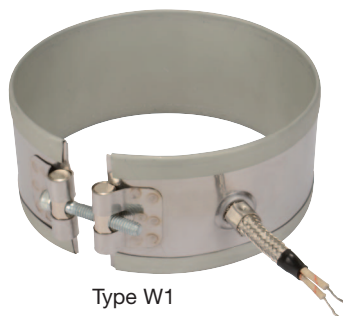
**Type W1** – Braided lead wire crimped in place for heaters under 2-1/2" I.D. and/or under 1-1/4" width.



The standard leads are 10" of wire braid over 12" of flexible leads.

*If longer leads are required, specify when ordering.*

**Type W1T** – Braided lead wire attached with a threaded fitting for heaters over/equal 2-1/2" I.D. and over/equal 1-1/4" width.



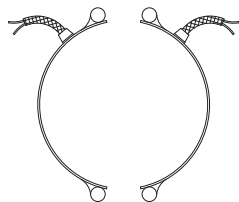
#### One-Piece Band

**Standard Termination Location:**  
next to gap; center of width

- \* **Minimum Inside Diameter:**  
2" (50.8 mm)
- \* **Minimum Width:** 1" (25.4 mm)
- \* **Maximum Volts:** 480VAC
- \* **Maximum Amps:** 12.5A

#### Two-Piece Band

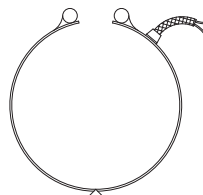
**Standard Termination Location:**  
next to same gap on each half;  
center of width



- \* **Minimum Inside Diameter:**  
2" (50.8 mm)
- \* **Minimum Width:** 1" (25.4 mm)
- \* **Maximum Volts:** 480VAC each half
- \* **Maximum Amps:** 12.5A each half

#### One-Piece Expandable Band

**Standard Termination Location:**  
next to gap; center of width

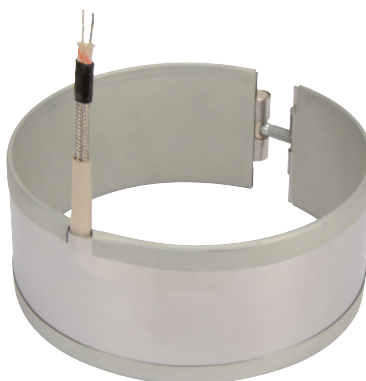


- \* **Minimum Inside Diameter:**  
2-1/2" (63.5 mm)
- \* **Minimum Width:** 1-1/4" (31.8 mm)
- \* **Maximum Volts:** 480VAC
- \* **Maximum Amps:** 12.5A

### Duraband Type W2 – Wire Braid Leads

The W2 wire braid exits at the middle of the segment on 1 and 2 piece designs and offset 1" from the middle of the segment for expandable designs. Sleeving is used for additional protection. The standard leads are 10" of wire braid over 12" of flexible leads with 3" of fiberglass sleeving.

*If longer leads are required, specify when ordering.*



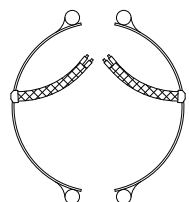
#### One-Piece Band

**Standard Termination Location:**  
opposite the gap; edge of width

- \* **Minimum Inside Diameter:** 7/8" (22.2 mm)
- \* **Minimum Width:** 1-1/8" (28.6 mm)
- \* **Maximum Volts:** 480VAC
- \* **Maximum Amps:** 12.5A

#### Two-Piece Band

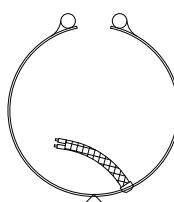
**Standard Termination Location:**  
center of each half;  
edge of width



- \* **Minimum Inside Diameter:**  
2" (50.8 mm)
- \* **Minimum Width:** 1-1/8" (28.6 mm)
- \* **Maximum Volts:** 480VAC each half
- \* **Maximum Amps:** 12.5A each half

#### One-Piece Expandable Band

**Standard Termination Location:**  
opposite the gap offset 1";  
edge of width



- \* **Minimum Inside Diameter:** 2-1/2" (63.5 mm)
- \* **Minimum Width:** 1-1/8" (28.6 mm)
- \* **Maximum Volts:** 480VAC
- \* **Maximum Amps:** 12.5A