

Bayonet Type Adapters



Spring-Loaded Bayonet Cap Type Thermocouples are used in conjunction with bayonet adapters. After inserting the thermocouple sheath through the adapter the spring is compressed and locked by the cap, pushing the sensing junction tight against the surface being measured for increased accuracy and faster response time.

Adapter Selection and Installation

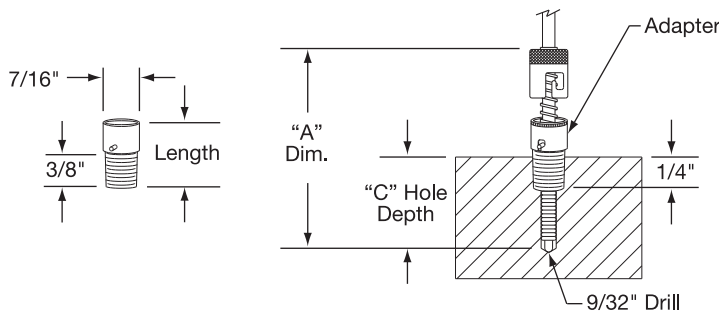
1. Select an adapter length by comparing the hole depth and thermocouple probe length in Table 1A.
2. Select from Table 1B a thread type for the adapter length determined in Table 1A.

Table 1A—Adapter Length for Bayonet Type Thermocouples (page 14-4) and RTDs (page 14-62)

Hole "C" (in)	Probe Length A (in)		
	7/8" Long Adapter	1-3/8" Long Adapter	2-1/2" Long Adapter
1/4 to 1/2	1 5/8	2	3 3/8
1/2 to 1	2	2 1/2	3 3/4
1 to 1 1/2	2 1/2	3	4 1/8
2 to 2 1/2	3 1/2	4	5 1/8
2 1/2 to 3	4	4 1/2	5 5/8
3 to 3 1/2	4 1/2	5	6 1/8
3 1/2 to 4	5	5 1/2	6 5/8
4 to 4 1/2	5 1/2	6	7 1/8
4 1/2 to 5	6	6 1/2	7 5/8
5 to 5 1/2	6 1/2	7	8 1/8
5 1/2 to 6	7	7 1/2	8 5/8
6 to 6 1/2	7 1/2	8	9 1/8

Table 1B—Bayonet Adapter for Threaded Type Thermocouples and RTDs

Part Number	Length (in)	Thread	Material
TCA-104-101	3/8	1/8"-27 NPT	Plated Steel
TCA-104-103	1 1/8	1/8"-27 NPT	Plated Steel
TCA-104-121	1 1/2	1/8"-27 NPT	Plated Steel
TCA-104-118	2	1/8"-27 NPT	Plated Steel
TCA-104-105	2 1/2	1/8"-27 NPT	Plated Steel
TCA-104-115	3 1/2	1/8"-27 NPT	Plated Steel
TCA-104-110	4	1/8"-27 NPT	Plated Steel
TCA-104-102	7/8	3/8"-24 UNF	Plated Steel
TCA-104-104	1 3/8	3/8"-24 UNF	Plated Steel
TCA-104-106	2 1/2	3/8"-24 UNF	Plated Steel
TCA-104-107	2 3/8	14 × 1.5mm	Stainless Steel
TCA-104-108	2 1/2	10 × 1.5mm	Plated Steel
TCA-104-111	2 1/2	12 × 1mm	Plated Steel
†TCA-104-116	2 1/2	12 × 1.5mm	Plated Steel
TCA-104-126	2	12 × 1mm	Plated Steel
†TCA-104-127	1	12 × 1mm	Plated Steel
TCA-104-128	1	12 × 1.75mm	Plated Steel
TCA-104-131	3	12 × 1mm	Plated Steel
TCA-104-132	5	12 × 1mm	Plated Steel



†Must be used with 12 mm ID bayonet caps

Pipe Clamp Adapters for Bayonet Type Thermocouples

Spring-loaded bayonet cap type thermocouples are used in conjunction with bayonet adapters. After inserting the thermocouple sheath through the adapter the spring is compressed and locked by the cap, pushing the sensing junction tight against the surface being measured for increased accuracy and faster response time.

Pipe Clamp adapters permit thermocouple placement without the drilling and tapping of holes to attach the adapter.

Part Number	Pipe Diameter (in)	
	Min.	Max.
TCH00001	1/2	7/8
TCH00002	7/8	1 1/2
TCH00003	1 3/16	2 1/4
TCH00004	2 1/4	3 3/16
TCH00005	3 5/16	4 1/4
TCH00006	4 7/16	5 1/4

