

### Closed Cell Elastomeric Thermal Insulation

#### Design Features

- \* *Cost Effective*
- \* *Easy to install*
- \* *Suitable for wide variety of environments, such as outdoor use and food service*
- \* *Temperatures to 257°F (125°C)*
- \* *UV resistant*
- \* *Fiber Free*

#### Specifications

**Material:** 3/4" (19mm) thick closed-cell and lightweight EPDM based elastomeric material

**Exposure Temperature Range:** -297°F through 257°F

**R-value:** 3

**Density:** 3 to 6 Lbs/ft<sup>3</sup>

**Water vapor permeability:** 0.10 perm-in (0.15 x 10<sup>-12</sup>)

**Water absorption (weight %):** Less than 5%

**Flammability:** UL-94 5 V-A. V-O



Sheet Width in (mm)	Sheet Length ft (m)	Description	Part Number
11 (279)	50 (15.2)	Installs around 2.5" O.D. Pipes and smaller	HTP90050
15 (381)	50 (15.2)	Installs around 4" O.D. Pipes and smaller	HTP90051
48 (1219)	25 (7.6)	Installs around vessels and large diameter pipes	HTP90052

#### FOIL TAPE

Adhesive aluminum tape for extra environmental protection.  
Up to 300°F (149°C).

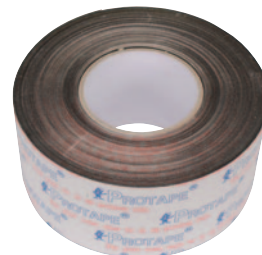
Description	Part Number
3" (76mm) x 180 ft. (55m) roll. To protect insulation from environmental damage.	HTP90055



#### SEAM-SEALING TAPE

Adhesive tape required for sealing seams.  
Up to 180°F (82°C).

Description in (mm)	Part Number
2" (51mm) x 82 ft. (25m) roll. Ideal for pipes and small vessels.	HTP90053
3" (76mm) x 82 ft. (25m) roll. Ideal for large vessels.	HTP90054



## INSUL-LOCK® DS Flexible Closed Cell Pipe Insulation

### Design Features

- \* Easy to install with precise fit
- \* Double Seal Technology
  - Built-in pressure sensitive adhesive
  - Built-in PVC overlap tape with acrylic adhesive
- \* Scrim reinforcement on the seam surface
- \* Non-porous, fiber-free, and resistant to mold growth
- \* Resistant to moisture vapor flow
- \* Compatible with heating cable and tapes

### Specifications

**Material:** Environmentally-friendly, CFC-free, flexible elastomeric thermal insulation

**Operating Temperature Range:**  
-70°F (-57°C) through 220°F (104°C)

**R-value:** 3

**Color:** Black

**Length:** 6.0 feet (1.8 meter)

**Thickness:** 0.5" (1.3 cm)

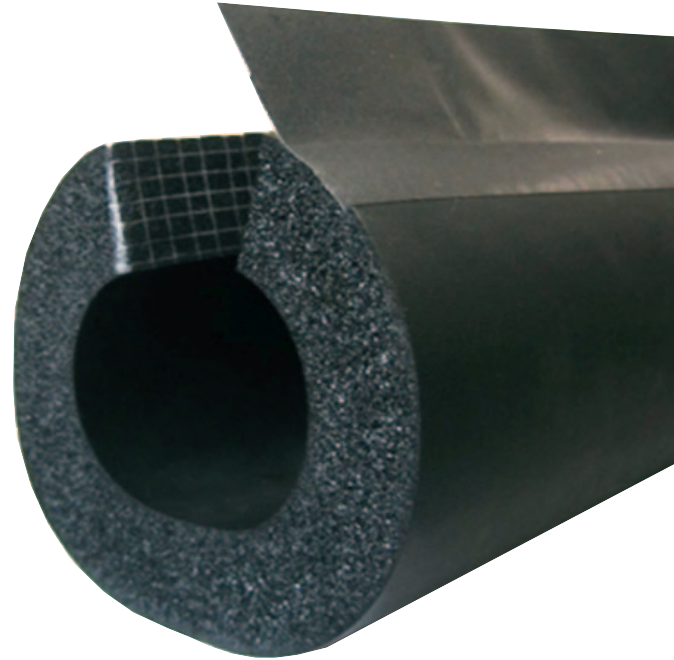
**Density:** 3 to 6 Lbs/ft<sup>3</sup>

**Water vapor permeability:**

Dry cup (Elastomeric insulation) 0.03 perm-in  
Wet cup (Glued seam with overlap) 0.12 perm-in

**Water absorption % (Volume change):** 0

**Flammability:** UL-94 5 V-A, V-O



### Typical Applications

- Freeze Protection
- Prevent condensation on refrigerant lines, cold water plumbing, roof drains, and chilled water systems
- Many other outdoor and indoor applications



### Standard Closed Cell Pipe Insulation

Preformed pipe insulations are 1/2 inch thick, 6 foot long with overlap flap with Pressure Sensitive Adhesive (PSA).

Nominal ID	Nominal OD	Recommended for Pipe OD	Part Number
7/8"	2-1/8"	3/4"	HTP90060
1-1/8"	2-3/8"	1"	HTP90061
1-3/8"	2-5/8"	1-1/4"	HTP90062
1-5/8"	2-7/8"	1-1/2"	HTP90063
2"	3-1/8"	none	HTP90064
2-3/8"	3-1/2"	none	HTP90065
2-5/8"	4"	none	HTP90066
2-7/8"	4-1/8"	none	HTP90067
3-1/8"	4-1/2"	none	HTP90068
3-1/2"	5"	none	HTP90069



### SEAM-SEALING TAPE

Seals spaces between multiple pieces of insulation and prevents heat loss.

.75" (51mm) x 180" (4.5 m) roll.

**Part Number:** HTP90058